

COVID-19
INFECTION PREVENTION
CONTROL PLAN (IPCP)/ COMMUNICABLE
DISEASE PREVENTION PLAN (CDPP)
ESKAY CREEK PROJECT

Updates includes PHO – Workplace Safety Jan_20_2022

Northern Health Authority – Expectations Dec_29_2021

Table of Contents

1. COVID-19 Infection Prevention and Control Plan (IPCP)/Communicable Disease Prevention Plan (CDPP).....	3
1.1 Employer Responsibilities	6
1.2 Exploration Manager Responsibilities	8
1.3 Skeena COVID-19 Infection Prevention Officer Responsibilities.....	10
1.4 Employees, Contractor Managers & On-Site Contractor Responsibilities	12
1.5 Visitors (Inspectors, Short-Term Visitors & Day Delivery Drivers).....	14
2. Site Risk Identification and Assessments	15
2.1 Risk Assessment Guidelines for COVID-19 (Adapted from OHSRG 6.34-6)	16
2.2 Risk Assessment by Location	18
3. Skeena's Crew Transportation Protocol	36
4. Isolation at Camp, Communicable Disease(s)	37
5. On-site First Aid & Medical Services.....	38
6. COVID-19 Rapid Antigen Screening & Isolation Protocols	39
7. Skeena COVID-19 Flow Charts.....	45
8. Resources / References	48

1. COVID-19 Infection Prevention and Control Plan (IPCP)/Communicable Disease Prevention Plan (CDPP)

Revision	Date	Author	Approved	Signed
Original Procedure	April 7, 2020	C. Spence/R.		
Review	May 17, 2020	NJ Adzich		
Updated	Feb 28, 2021	NJ Adzich		
Updated	June 6, 2021	NJ Adzich		
Updated	Dec, 17, 2021	NJ Adzich		
Updated	Jan_27_2022	NJ Adzich		

Skeena's Infection Prevention Control Plan (IPCP)/ Communicable Disease Prevention Plan (CDPP) supports the company's goals and commitment of "We are all in this together, ZERO Harm." Skeena's plan provides ongoing measures for the protection of all employees, contractors, and visitors at all Skeena work sites and camps to reduce the risk of transmission of COVID-19 and other communicable disease (including norovirus and seasonal influenza). This policy applies to workers and visitors prior to traveling, during travel, while on the worksite and while returning home. In addition to reducing interactions with the local communities, Skeena strives to minimize the burden on local health care systems to sustain the current and future resiliency of our industry.

The IPCP/CDPP's purpose is to establish operational and industry prevention risk assessments and protocols to assist in the implementation of orders, notices and guidance given by the British Columbia Public Health Officer (PHO) as per the COVID-19 pandemic and communicable disease that may circulate in the workplace. This plan complies with the Public Health Act, Workers Compensation Act, Ministry of Mines Guidance to Mining & Smelting Operations, WorkSafeBC Occupational Health & Safety Regulation, Health & Safety Reclamation Code for Mines in BC, BC Guidelines for Industrial Camps Regulation, BCCDC - Protecting Industrial Camp Workers, Contractors & Employers Working in Agriculture, Forestry & the Natural Resources Sector (July 28th, 2020 version), Northern Health Food Safe requirements, Northern Health Authority expectations and Medical Health Officer requirements. This list will be updated according to the current direction and guidance of the Public Health Officer. The IPCP/CDPP is additional to Skeena's 2020 Occupational Health & Safety Program that is also in effect to ensure the ongoing health, safety and well being of our workforce, local communities, First Nation communities and the environment.

By implementing the advice and guidance given by the BCCDC, Skeena aims to significantly contribute to breaking the chain of COVID-19 and other communicable disease that may circulate at the workplace. Implementation of these guidelines should also aid in preventing and lowering the risk of transmission should an exposure occur amongst local communities, First Nation communities, employers, employees,

contractors and visitors. In addition to eliminating or minimizing potential exposures to biological agents (i.e., COVID-19 and other communicable disease), these protocols will identify the preventative actions that will be taken to reduce the number of social interactions between employers, workers, visitors and support personnel to protect one another and the First Nation communities. Such actions include development and implementation of a mandatory COVID-19 site access vaccination policy, for all incoming Skeena employees, contractors and visitors arriving to Skeena Worksites effective Nov.15, 2021, while being mindful of privacy and human rights laws and taking into consideration workers who cannot be vaccinated (refer to third party medical Physician). Actions also include implementing BCCDC/PHSA asymptomatic POC Rapid Antigen Screening Program (confirmatory PCR testing on hold Dec_29_2021).

Skeena has implemented 2 metre physical distancing, mandatory isolation masks (with ear loops) to be worn in all inside areas, enhanced worksite protection through other means where physical distancing is not practical, increased hygiene practices (outlined throughout this document) and enhanced cleaning and disinfecting of high touch areas at all worksites.

Skeena is committed to constantly following updates put forward by the BCCDC, Northern Health Authority & WorkSafeBC enabling provision of the necessary updates to its employees. We are committed to maintaining clear lines of communication with the local communities of Northwestern British Columbia to protect the health of these rural communities, where access to healthcare services may be limited.

All Skeena employees, contractors and visitors (including inspection agencies) must follow the procedures outlined in the IPCP/CDPP to prevent or reduce exposure to any or all biological agents. Non-compliant Skeena employees will be subject to Skeena's Progressive Discipline Policy. Non-compliant contractors or visitors will be reported to the Mine Manager and may be requested to leave the Skeena worksite immediately.

The Skeena IPCP/CDPP will be posted in the Skeena office and in various camp, worksite locations and posted on the Skeena Resources Limited website. A presentation of the plan will be available to a Public Health Officer or Provincial Infection Prevention Control Officer upon request or during an inspection. Plans are reviewed and updated as required.

The Skeena COVID-19 Emergency Response Plan ensures expedient recognition of COVID-19 transmission, cluster or outbreak followed by isolation, testing procedures and treatment of the patient. This plan helps to ensure the health and safety of all workers on the Eskay projects.

Skeena acknowledges the following information regarding COVID-19 and communicable disease that may circulate in the workplace and our responsibilities therein:

- Coronaviruses are a large family of viruses found mostly in animals. In humans, they can cause diseases ranging from the common cold to more severe diseases such as severe acute respiratory syndrome (SARS) and middle east respiratory syndrome (MERS).
- The disease caused by the new coronavirus and variants thereof has been named COVID-19.
- COVID-19 has been declared a global pandemic.
- All communicable diseases are considered reportable disease, the local Medical Health Officer must be notified of all Positive Cases, for further classification of either cluster or outbreak.
- Definition of a cluster: *All positive cases in isolation and camp situation under control as per MHO review.*
- The definition of an outbreak is: *Covid-19 spread in camp not under control- Exploratory meeting required by NHA Cross Discipline Team.*
- Covid-19 is transmitted via liquid droplets when a person talks, coughs or sneezes. The virus can enter via these droplets through the eyes, nose, or throat if you are in close contact with another person.
- Additionally considered to be airborne (e.g., transmitted through the particles floating in the air) and it cannot be transmitted through skin contact but is thought to be absorbed through the eyes.
- It can be spread by touch if an infected person has used their hands to cover their mouth or nose when they cough and then touched surfaces that others later encounter. Therefore, it is recommended to cough or sneeze into your elbow and wash your hands regularly.
- Symptoms of COVID-19 are like other respiratory illnesses including the flu and common cold. These symptoms include coughing, sneezing, fever, sore throat and difficulty breathing. Additional symptoms may include muscle aches, fatigue, fever, headache, loss of appetite, chills, runny nose, nausea, vomiting, diarrhea and loss of smell or taste.
- Some people infected with COVID-19 may experience few or no symptoms (asymptomatic), while illness in others may range from mild to severe.
- The serial interval for COVID-19 Delta variant is estimated to be five to six days however can be detected up to 14 days. Whereas the Omicron is often detected in 2-3 days and recognized with an increase in transmission at an exponential rate.
- Some people are more vulnerable to developing severe illness or complications from COVID-19 including older people and those with chronic health conditions. Omicron also invades the younger age groups.
- Asymptomatic testing identifies individuals without symptoms who may be positive for COVID-19. Dec. 28th, 2021, PHSA no longer requests confirmatory PCR pending further notice.
- Symptomatic screening upon arrival with POC Rapid Testing under PHSA continues.
- Vaccinations are instrumental in the control of the spread of the COVID-19 virus and other communicable disease, such as the flu. Vaccinations also assist in decreasing the overall risk of serious consequences.

- Mental health and wellness are considered to ensure resilience for those on site, resources are available through the site medic as well as through WorkSafeBC recommendations and resources.
- Employer EAP Programs offer employee supports.

1.1 Employer Responsibilities

- Develop and implement a COVID-19 Infection Prevention and Control Plan/Communicable Disease Plan to prevent and control the risk of transmission of COVID-19 and communicable disease among workers at the Eskay Creek worksite prior to travel, when travelling to site, while working on site and while returning home.
- Resources are available as additional measures may be required with the elevated risk of communicable disease.
- Ensure a risk assessment is provided for each Skeena work location and camp to eliminate or control the risk of employee exposure to COVID-19 or other communicable disease that may circulate in the workplace.
- Provide means to assess the work site daily to address any concern areas and to incorporate any changes or orders that may be required as they develop to ensure control technologies are working effectively.
- Keep updated with the information posted on the Province's COVID-19 website (www.gov.bc.ca/COVID19) and provide all workers with updated information as it becomes available.
- Communicate protocols for safe practices and precautions for risk reduction to all employees, contractors and visitors.
- Develop an employee/contractor/visitor screening system to ensure workers are healthy prior to travelling to camp, while working in camp and while returning home from camp.
- Develop a Sick Leave Policy.
- Implement, support and provide adequate training for all Skeena employees, contractors and visitors to ensure their rights and responsibilities are acknowledged.
- Ensure workers are always able to maintain physical distancing of two meters where practical while completing their work safely. Should physical distancing not be possible (i.e., during vehicle or helicopter transport or while working in small spaces) appropriate risk mitigation measures will be implemented.
- Isolation masks with ear loops are mandatory in all buildings and outdoor worksite locations when unable to physical distance.
- Reduce in-person meetings by providing communications with Zoom or other means.
- Maintain 2-week crew rotations and limit incoming inter-rotational movements to operational requirements only.
- Ensure additional hand wash facilities hand sanitizing stations are installed to support and accommodate frequent hand washing.
- Provide disposable gloves for all workers for access to common use items while in the kitchen dining and bag up areas.

- Implement Occupancy Limits in all meeting rooms and facilities.
 - Ensure resources are available to ensure building ventilation is adequate and maintained.
 - Ensure Hepa filters and or air purifiers are available where required.
 - Provide barriers in kitchen dining areas where 2 metre physical distancing is not possible while enjoying a meal.
 - Perform regular inspections of all areas of the workplace to remedy unsafe or harmful conditions without delay and maintain high levels of worksite and worker hygiene.
 - Ensure worker emergency contacts are available in the event of a COVID-19 related issue.
 - Support contact tracing for Positive Cases identified at the worksite.
-
- Ensure daily cleaning and sanitizing of transport vehicles to include areas such as vehicle door handles, seat belts, steering wheels, gear shifts, all cockpit buttons, dials, reefer trailer door handles, mobile radio mics, mobile radios, handheld radios, work binders and notebooks.
 - Ensure adequate decision-making is effective on a case-by-case basis for health scenarios that arise.
 - Provide on site first aid facilities and first aid or medical personnel to monitor and support worker well being during illness.
 - Provide a rapid response if a worker develops symptoms of COVID-19 (i.e., fever, sore throat, coughing sneezing, or difficulty breathing) including procedures to isolate the worker and provide access to a health professional for further assessment as required.
 - Provide COVID-19 Rapid Antigen Screening for asymptomatic individuals upon arrival and symptomatic individuals as presented.
 - Ensure workers with COVID-19 like symptoms will not be permitted to work. These workers must self-isolate, unless instructed otherwise by the medical officer, and be provided support during the isolation period.
 - Support workers who require self isolation at the worksite or those that require offsite medical care.
 - Appoint a COVID-19 H&S Coordinator.
 - Ensure workers, contractors and visitors are educated and trained to an acceptable level of prevention awareness and safe practices while travelling and working on all Skeena sites or camps. They should also be kept up to date with present COVID-19 information.
 - Ensure workers follow all site-specific housekeeping and sanitizing procedures.
 - Follow-up with JOHSC for identifying and resolving workplace issues regarding health & wellness issues.
 - Ensure the IPCP/CDPP contains details on the required personal protective equipment (PPE) when physical distancing cannot be maintained (i.e., passengers in their work pods or helicopter).

- Ensure there is an adequate supply of cleaning and sanitary supplies, disposable protective masks, eye protection and gloves as per the PHO directive.
- Maintain training, competency assessments, work activity monitoring and inspection records.
- Ensure the up-to-date IPCP/CDPP is posted and available to employees, contractors and visitors in a visible location in all Skeena Worksite offices.
- Provide education and resources to evaluate the symptoms of COVID-19 and communicable disease compared to the common cold using the BC COVID-19 application (app) as a resource for confirmation.
- Develop a self declaration for all day visit contractors or visitors prior to arriving at the Skeena worksite.
- Ensure on site training sessions maintain physical distancing or appropriate measures are followed if physical distancing is not practical.
- Ensure the WSBC Exposure Control Plan for OFAA's recognizes the hazards for treating patients with potential COVID-19 symptoms and anyone that may have injuries requiring first aid who are asymptomatic (are infected but show no symptoms of COVID-19).
- Establish protocols for the use of PPE and training for donning and doffing PPE which includes following proper waste disposal methods.
- Display COVID-19/Communicable Disease signage as per BCCDC directives in Skeena offices and other work areas and camp locations.
- Develop a COVID-19 Emergency Response Plan.
- Assemble a COVID-19 Emergency Response Committee
- Provide education and awareness to all contractors about the Skeena COVID-19 Emergency Response Plan.
- Maintain a position as a member on the COVID-19 outbreak Emergency Response Committee.
- Provide financial compensation and emotional support to employees receiving COVID-19 vaccinations and other vaccine preventable conditions to decrease the overall risk of transmission and serious consequences,
- Site Vaccination Policy was in effect as of Nov 15, 2021 and double vaccination requirements was in effect as of Dec. 29th, 2021.

1.2 Exploration Manager Responsibilities

- Support and assist in the implementation of the COVID-19 IPCP/CDPP
- Support the COVID-19 Infection Prevention Manager.
- Ensure workers continue to complete the Skeena Self Health Assessment form to support worker health prior to traveling to camp.
- Follow up to ensure this has been sent to the IPCP/CDP Officer at site by 6:00 the day prior.
- Reduce in-person meetings and gatherings while holding shop meetings in open spaces or outside.
- Provide adequate space for training sessions to allow for social distancing.
- Monitor workers who may display symptoms of COVID-19 (i.e., fever, sore

- throat, sneezing, coughing or difficulty breathing).
- Support workers who are unsure of the COVID-19 or communicable disease symptoms by referring them to the medic for the BC COVID-19 self-assessment and further assessments or COVID-19 testing.
 - Follow Skeena Rapid Antigen Screening as per PHSA.
 - Provide BCCDC screening at site to ensure zero transmission by eliminating the requirement for worker transport to a local community for testing.
 - Ensure an adequate supply of masks, gloves, face shields and gowns are available in the event of a suspect COVID-19 or other communicable disease that may circulate in the workplace to protect medics and all other workers.
 - Plan to assist in a suspected COVID-19 worker safely and expediently to the isolation location at camp or off site if a higher level of care is required.
 - Follow destination of worker if sent to a higher level of care to ensure health and mental wellness are okay.
 - Provide personal products, food and other needs to ensure the worker on site is supported as per the direction of the Northern Health Medical Officer.
 - Oversee the way workers are transported between camp and the worksite to limit the risk of transmitting COVID-19 and other communicable disease between workers the driver or helicopter pilot to the extent practicable.
 - Establish worker pods for vehicle and helicopter transport.
 - Ensure workers are adequately instructed on mitigation controls for the prevention and transmission of COVID-19 while travelling to and from various work locations on the project.
 - Monitor workers compliance with the requirements imposed by the Public Health Orders for industrial camps.
 - Ensure physical distancing of two meters is maintained, where practicable, and if required follow the procedures in place to prevent the risk of COVID-19 transmission and to control outbreaks.
 - Work in a manner that eliminates or minimizes the risk of transmission to other workers.
 - Monitor all work activity, document the observations and immediately correct non-conformance. All non-conformance events will be documented and subject to progressive discipline in the unlikely event of a reoccurrence.
 - Reinforce and encourage personal hygiene measures to minimize potential virus transmission.
 - Add COVID-19 updates to the daily toolbox meetings.
 - Ensure all crews are accounted for everyday prior to heading out to designated worksite locations from camp.
 - Ensure all contractor employees are aware of the COVID-19 Emergency Response Plan and understand the expectations in the event of an outbreak.
 - Ensure open and supportive communications for all workers about the challenges they or others may be experiencing.
 - Participate as a member of the COVID-19 Emergency Response Committee.
 - Participate in JOHSC meetings to review results of inspections, monitoring and ensuring preventive practices are being followed

1.3 Skeena COVID-19 Infection Prevention Officer Responsibilities

- Act as liaison between Skeena, the PHO, Medical Health Office, BCCDC and the Provincial Infection Prevention Manager and Control Officer.
- Maintain the original IPCP (May 2020) and implement an up-to-date COVID-19 IPCP/Communicable Disease Prevention Plan (CDPP) as per PHO orders and WorkSafe BC communicable disease prevention: A Guide For Employers.
- Ensure all camps, offices and working spaces/facilities comply with the IPCP/CDPP.
- Provide training for donning and doffing face masks.
- Provide training and competency to site Medics for PCR and POC Rapid Antigen Testing.
- Provide training on shipping documentation and handling procedures of Hazardous Substances (Biological).
- Develop Skeena /PHSA POC Rapid Antigen Screening program.
- Provide required COVID Manifest and inventories to PHSA.
- Order PHSA POC test kits and supplies.
- Provide Weekly Case Report to Northern Health Medical Health Officer and discuss COVID-19 case management.
- Provide Bi Monthly Workforce Projection report to NHA. Report all positive cases to MHO & local community EMC.
- Contact Medical Physician on call regarding positive cases.
- Update the Mine Site Manager on PHO updates and positive cases of COVID-19 or communicable disease.
- Provide training for implementation of the IPCP/CDPP, including safety measures and procedures, physical distancing, proper hygiene practices, daily self monitoring and reporting of symptoms or illness.
- [Online training](https://worksitesafety.ca/product/training/online/coronavirus-COVID-19/) is required by all employees, contractors and visitors prior to arriving on site (<https://worksitesafety.ca/product/training/online/coronavirus-COVID-19/>)
- Develop a Communicable Disease orientation for all workers, contractors and visitors prior to arrival on site for awareness of Skeena's expectations.
- Communicate, support, and encourage workers with flu like symptoms to immediately report symptoms of COVID-19 (i.e., fever, headache, sore throat, sneezing, loss of taste or smell, coughing or difficulty breathing).
- Support workers who call in with symptoms prior to crew change day. Follow PHO and Local Health Authority travel restrictions and meet requirements for airline travel.
- Refer workers to Skeena HR for sick leave entitlement.
- Advise Contractor Supervisor & HR of worker illness on site.
- Develop a method for recording daily health & wellness checks for monitoring on all worksites/camp locations

- Provide support and reassurance to workers at site unsure of the COVID-19 symptoms, review symptoms with the self assessment BC COVID-19 app.
- Provide isolation masks to all workers that may be ill or that are unable to physical distance.
- Anyone demonstrating COVID-19 or flu like symptoms during the workday must wait in a location separate from all other workers and report the occurrence to the medic. The medic will attend the location, assess the worker and transport them to an isolation room at camp.
- Make access to the medic and on call physician available should COVID-19 or flu like symptoms be present. Also, ensure all medics have the understanding and competency to aid with a COVID-19 rapid antigen collection and screening, confirmatory PCR collection and preparation for transportation via Hot Shot service to Terrace. (Presently on hold)
- Ensure BCCDC PCR kits are available at each site. (Temporarily Discontinued)
- Follow BCCDC & Northern Health guidelines for isolation requirements for Vaccinated positive Covid -19 individuals.
- Keep in touch with Northern Health Regional COVID-19 immunization coordinator.
- Maintain Ongoing communications with Northern Health Resource and Development Regional Lead.
- Discuss cases in other areas with the Northern Health Medical Health Officer to understand how we can improve our circumstances to break the chain of transmission wherever possible.
- Notify the Physician on call anytime a positive case is identified,
- Update and engage the Skeena COVID-19 Emergency Response Team on current positive, cluster and or outbreak conditions.
- Isolation accommodations have been updated to accommodate Positive individuals in personal rooms and ventilation redirected ensuring no risk of transmission.
- If a worker is required to be transported to a medical facility and is then released for the required self monitor prior to returning home, an Isolation accommodation location is available in Terrace, B.C.
- Arrange to get suspect workers to the appropriate medic on site for isolation and Testing.
- Ensure expedient transportation should an ill worker require a higher level of care.
- Arrange a MTC if required. Note the compartment in back is separate from the front. Medic rides in front with radio contact in place.
- Stay in daily contact with workers at isolation locations if sent off site for COVID-19 care.
- Maintain the strictest of confidentiality.
- Oversee how workers are transported between worksites and the medical facility to ensure that transportation limits the risk of transmission of COVID-19 between the workers and the driver or helicopter pilot to the extent practicable.

- Follow Skeena's COVID-19 safety plan and DOT rules for helicopter use.
- Ensure all passengers are wearing an isolation mask and gloves prior to boarding the aircraft.
- Provide worker training on mitigation controls for the prevention and transmission of the COVID-19 and other communicable disease on all Skeena camps and work sites and while travelling to pick up and drop off locations.
- Monitor worker compliance with the requirements imposed by the Public Health Order.
- Ensure physical distancing of two meters is maintained, where practicable, and if required follow the procedures in place to prevent the risk of transmission of COVID-19 and the control of outbreaks.
- Monitor all work activity daily, document the observations and ensure the current controls are working to prevent a transmission or an outbreak.
- Continual review and reminders of the importance of the stringent protocols in place to ensure everyone's health & safety either on or off site.
- Ensure all protocols are followed as the complacency of being double vaccinated becomes evident.
- Perform ongoing camp inspections to maintain adequate supplies and ensure cleaning schedules are adhered to as per BCCDC and Northern Health restrictions and requirements, including Food Safe Requirements.
- Immediately correct non-conformance. All non-conformance events will be documented and reported to the Mine Manager.
- Non conformance may lead to loss of camp privileges as per Skeena's Progressive Disciplinary Policy.
- Participate in the COVID-19 Outbreak Emergency Response Plan.
- Post appropriate BCCDC & NHA communicable disease signage where visible and effective.
- Participate in JOHSC meetings to review results of inspections, monitoring and ensuring preventive practices are being followed.

1.4 Employees, Contractor Managers & On-Site Contractor Responsibilities

- Prior to starting work with Skeena, workers must do the following:
 - Complete the Worksite Safety Pandemic Awareness Training.
 - <https://worksitesafety.ca/product/training/online/coronavirus-COVID-19>
 - Follow Skeena's COVID-19 IPCP to prevent the transmission of infection.
 - Complete the communicable disease orientation prior to arrival on site.
 - Complete Skeena's self health assessment and submit by 6:00 pm the evening prior.
 - Contact Norma Jean at 778-210-0669 or email normaje@skeenaresources.com should you have questions.
- Follow COVID-19 / communicable disease prevention practices.
- Participate in Skeena mandatory Vaccination Policy.
- Participate in COVID-19 Rapid Antigen Screening Program.

- Ensure attendance of daily health & wellness checks, with the Medic times are posted at camp.
- If arriving on site from another remote work camp a **NEGATIVE** Rapid Antigen Test **MUST** be provided to Infection Prevention Manager, before leaving work camp.
- Wash or sanitize hands frequently throughout the day especially before and after break times, after using the washroom, when workstations are changed and when tools are switched. This must be encouraged as much as possible.
- Wear an isolation mask in all-indoor spaces and outdoor work locations where workers are unable to physically distance.
- Practice cough and sneeze etiquette.
- Keep hands away from your face, eyes, mouth, and nose.
- Do not go to work or leave your isolation area if you have COVID-19 or flu like symptoms.
- Report COVID-19 or flu like symptoms immediately to the medic, cover your mouth with a mask, stay in your room and contact the medic over the radio.
- Agree to follow the COVID-19 Isolation at Camp SOP, if your screening test result is Positive.
- To the extent practicable, reduce close contact with other people by maintaining a two-meter distance and avoid shared spaces. If you are unable to physically distance, you must wear a mask or face covering.
- Understand the high-risk exposure hazards in all areas of Skeena worksites including areas such as drills, core shacks, geo shacks, offices, water hauling areas, outhouses, washrooms, kitchens, showers, bunkhouses, and transportation vehicles where there is more than 1 person.
- Comply with Skeena's safe work procedures as directed by the Mine and Exploration Manager at all times.
- When travelling in motor vehicles with two or more workers, to limit the risk of transmission of COVID-19 between one another and the driver, workers must wear gloves and an isolation mask or face covering.
- When in the helicopter, isolation masks with ear loops will always be worn in addition to gloves. These must be in place prior to boarding the aircraft.
- Understand your right to refuse unsafe work and ask for assistance whenever you are unsure if a practice or specific situation is unsafe. Refer to Skeena's OH&S Refusal of Unsafe Work Policy.
- Use the required PPE as instructed and follow proper donning and doffing procedures.
- Avoid any unnecessary visits to public establishments or remote camps unless authorized by the Exploration Manager or COVID-19 Communicable Disease Coordinator. This will exclude personal or family member medical emergencies, critical medical appointments, and evacuation orders.
- Essential Workers arriving off of regular scheduled rotation require an approval after a review is completed by Mine Site Manager, H&S manager, & Manager of Infection Prevention.

- There may be a requirement to provide a Negative Rapid Antigen test prior to travelling to site.
 - Know how and when to report any possible COVID-19 exposures at work or at home to the COVID-19 Infection Prevention Manager and the Mine or Exploration Manager. Follow the Skeena COVID-19 self assessment flow charts.
 - Participate in the JOHSC meetings for awareness and ability to raise health and safety concerns.

1.5 Visitors (Inspectors, Short-Term Visitors & Day Delivery Drivers)

- Request authorization from the Skeena Mine Manager, Site Manager, Construction Manager, Exploration Manager or COVID-19 Infection Prevention Manager to visit the location required.
- Complete the Skeena COVID-19/Communicable Disease documentation. These must be received by the Infection Prevention Manager by 18:00 the evening prior to arrival. This documentation includes:
 - Pandemic awareness training.
 - Skeena's communicable disease orientation.
 - Self health questionnaire
- Bring their own PPE to site which must include isolation masks, gloves, and hand sanitizer.

Following authorization, visitors will be provided an on-site visitor COVID-19 and H&S orientation completed by the Skeena Mountain Safety or H&S Advisor.

Qualified Person

Section 6.34(b) of the *Regulation* requires that the risk assessment be conducted by a qualified person to determine the potential for occupational exposure by any route of transmission. Under Section 1.1 of the *Regulation*, "qualified" means being knowledgeable of the work, the hazards involved and the means to control the hazards by way of education, training, experience or a combination of all three.

The potential for occupational exposure must be evaluated without regard to the availability or use of personal protective clothing and equipment. That is, the risk to an unprotected worker must be assessed.

2. Site Risk Identification and Assessments

SITE RISK ASSESSMENT FOR COMMUNICABLE DISEASE RISK OF WORKPLACE EXPOSURE	
SITE	ESKAY CREEK (MINING EXPLORATION)
DATE OF ASSESSMENT	June 1, 2021, reviewed December 17, 2021
ASSESSMENT TEAM	COLIN RUSSELL (Mine Site Manager) RAEGAN MARKEL (Employer Representative) <u>Brenna Bacon</u> : For the Worker Representative or JOHSC <u>Tyler Glubrecht</u> : For The Worker Representative or JOHSC Norma Jean Adzich, CSO, COHS, EMA, OFA 3 COVID-19 – Infection Prevention Manger
OBJECTIVE	To identify all jobs, tasks and procedures for which potential occupational exposure to COVID-19/Communicable Disease is anticipated and to evaluate the likelihood that such exposure would occur.
OUTCOME	Create a Workplace Exposure Control Plan to mitigate risk of exposure to workers while travelling to and from the worksite and while working on Skeena worksites and camps
REVIEW OF WORKPLACE EXPOSURE CONTROL PLAN	A daily assessment of worker health and work environment to ensure controls implemented are being practiced and are effective at decreased the risk and preventing a COVID-19/Communicable Disease outbreak by breaking the chain of transmission. Daily review and reporting of BCCDC and PHO updates and information.

2.1 Risk Assessment Guidelines for COVID-19 (Adapted from OHSRG 6.34-6)

Risk assessments for transmission from social interactions and high touch areas are two dimensional based. Modification potential is the degree in which activities can be mitigated to reduce risk through:

1. Contact intensity (close or distant) and the duration of contact (brief or prolonged).
2. Number of contacts present at one time.

RISK ASSESSMENT FOR COVID-19	LOW RISK	MODERATE RISK	HIGH RISK
	Workers who typically have no contact with people infected with COVID-19. e.g., Kitchen workers	Workers who may be exposed to people from time to time in relatively large, well-ventilated workplaces. e.g., Geology shacks, core shacks, drill Shacks	Workers who may have had contact with infected patients, or with people in small, poorly ventilated workplaces. Workers who are not able to physical distance while travelling to the worksite from camp. e.g. Shared handwash stations, washrooms and toilets, all workers entering food service areas, cleaning staff underground workers
HAND HYGIENE	Yes – washing with soap and water, using an alcohol-based rub or using disinfecting hand wipes	Yes – washing with soap and water, using an alcohol-based rub or using disinfecting hand wipes	Yes – washing with soap and water, using an alcohol-based rub or using disinfecting hand wipes
DISPOSABLE GLOVES	Required in all food service kitchens, lunchroom areas and worn by kitchen staff and all workers	Required in all food service kitchens and lunchroom areas. Not Required in other areas unless handling contaminated objects on a regular basis	Required in all food service kitchens, lunchroom areas, for all first aid treatments and nitrile (i.e., when working directly with COVID-19 patients), COVID-19 testing. if you do not have hand wash or hand hygiene available. Also required If you are unable to physically distance for travel to work locations
APRONS, GOWNS OR SIMILAR BODY PROTECTION	Aprons are always required when working in the kitchen	Aprons are always required when in the kitchen working	Aprons are always required when working in the kitchen Yes – during all first aid treatments (or when working directly with COVID-19 patients) Cleaning staff to wear protective suits when

			cleaning all areas exposed to COVID-19 (COVID-19 testing).
EYE PROTECTION – GOGGLES OR FACE SHIELD	Not Required	Not Required	<p>Yes – when working directly with injured workers or COVID-19 patients (COVID-19 Testing)</p> <p>When cleaning and disinfecting washrooms, showers, toilets and handwash stations.</p> <p>When cleaning first aid rooms if suspect COVID-19</p>
AIRWAY PROTECTION – FACE MASK OF COVERING	Required in all work locations where unable to physically distance and camps must double mask if COVID-19 ERP is initiated	Required in all work locations and camps where unable to physically distance. Double mask if COVID-19 ERP is initiated	<p>Yes – minimum N95 respirator or equivalent (i.e., when working directly with COVID-19 patients)</p> <p>Isolation mask anytime unable to physically distance with any of the workforce cooks while preparing food in the kitchen (COVID-19 testing)</p> <p>Double mask if COVID-19 ERP is initiated.</p>

2.2 Risk Assessment by Location

PART 1: SITE RISK ASSESSMENT BY LOCATION	
AREA ASSESSED	Eskay Main Office
External Exposure Potential	Visitors, delivery drivers, commercial truck drivers, office workers, contractors, expeditors, water truck drivers, day delivery drivers, all workers.
Internal Exposure Potential	Managerial and administration staff, shop workers, contract workers.
Risk of Exposure	High, workers who have travelled from outside community.
Recommendations	<ul style="list-style-type: none"> • The Eskay Creek work site locations are restricted access with signs posted on the Eskay Creek Road at km 43.5, McLymont and at temporary areas of use. • All travelers must obtain prior permission granted by the Mine Manager or Exploration Manager before entering office. • Hold virtual or telephone meetings. • Practice physical distancing of two meters. • Visitor self-health questionnaire to be completed prior to working on the Eskay Mine site. • Self-Health Assessment and questionnaire is provided for screening to support worker health prior to travel and while on site. • Workers that are ill must stay home and are not permitted onsite until medical clearance is given (or ten days from onset of symptoms have passed). A COVID-19 test is required. • Individuals travelling from outside of Canada must follow Federal Restrictions. • Offer masks as they are mandatory on all worksites and indoor locations where unable to physically distance. • Limit access to the office. Signage is posted to call the office to arrange outdoor meetings for workers, contractors and visitors. • No access to visitors not approved to site. • Double Vaccinations required as of Dec. 29, 2021 • Provide visitor OH&S orientation including COVID-19 accepted practices. • Promote and encourage hand washing and sanitizing. • Practice cough and sneeze etiquette. • Do not touch your face.

	<ul style="list-style-type: none"> • Sanitize high touch areas like door handles and light switches after an external person has left. • Administration staff will sanitize personal work area at the start and end of each day. They will sanitize cell phones, printers, brooms etc. prior to use. • Daily cleaning and disinfecting of washrooms, door handles, light switches, and any other high touch areas. • Sanitize counters, light switches, computers, cell phones, binders, printers, and fax machines before and after work. • Discontinue use of shared coffee pots and fridges.
AREA ASSESSED	Staging / Laydown areas
External Exposure Potential	Contractors and sub-contractors, expeditors, maintenance workers, machinery operators, helicopter transportation, commercial truck traffic.
Internal Exposure Potential	Shop workers, managers, designated Skeena employees and contractors.
Risk of Exposure	High
Recommendations	<ul style="list-style-type: none"> • Physical distancing of two meters must always be practiced. Where not practical, masks and gloves must be worn. • Safety Glasses and gloves are always required. • Sanitize or wash hands. • Practice cough and sneeze etiquette. • Do not touch your face. • Double Vaccination required as of Dec.29, 2021
AREA ASSESSED	Core Shack (Work Involving Multiple Employees)
External Exposure Potential	Approved visitors ONLY
Internal Exposure Potential	Skeena employees, contractors.
Risk of Exposure	High
Recommendations	<ul style="list-style-type: none"> • Perform daily tail gate meeting with physical distancing of two meters. • Gloves and masks or face coverings will be worn at all times. • Encourage handwashing and sanitizing. • Practice cough and sneeze etiquette.

AREA ASSESSED	Mobile Equipment
External Exposure Potential	Sub-contractors
Internal Exposure Potential	Shop workers, qualified operators.
Risk of Exposure	Medium
Recommendations	<ul style="list-style-type: none"> • Clean and disinfect all surfaces pre and post trip. • High touch areas on equipment must be sanitized between users or gloves must be worn. • Assign equipment for each user where practical. • Wash or sanitize hands before and after tasks are completed. • Provide additional outside wash stations. • Double Vaccinations required as of Dec.29, 2021
AREA ASSESSED	Storage Area / Site Warehouse
External Exposure Potential	Expeditors shopping for camp groceries and supplies.
Internal Exposure Potential	Receiving shop workers, office staff, support workers, kitchen staff.
Risk of Exposure	Medium
Recommendations	<ul style="list-style-type: none"> • Physically distance two meters where practical. • Masks and gloves are available if unable to physically distance and while handling boxes. • Regularly wash and sanitize hands. • Practice cough and sneeze etiquette. • Keep hands away from face. • Double Vaccinations required as of Dec.29, 2021
AREA ASSESSED	Washroom / Toilets / Outhouses
External Exposure Potential	Contractor managers, employees, sub-contractor delivery workers.
Internal Exposure Potential	Skeena employees, subcontractors.
Risk of Exposure	High
Recommendations	<ul style="list-style-type: none"> • Designate day use toilets for delivery personnel. • Provide temporary outside hand washing facilities with hot and cold running water.

	<ul style="list-style-type: none"> • Physically distance two meters during breaks. • Assign toilets to work pods if practical. • Promote hand washing or sanitizing. • Follow workplace hygiene practices. • Increase cleaning and disinfecting frequency of high traffic areas that include walls, sinks, door handles and light switches. • Add additional hand wash facilities and hand sanitizing locations by outhouses. • Provide disinfecting spray for before and after washroom use. • Hand sanitizer is only available in hand wash stations for after washing. • Outhouses will be cleaned with QUAT prepared in a one-gallon pump spray bottle to disinfect walls, toilets and other high touch areas. • Masks, gloves, face shields and safety goggles are supplied for the cleaning staffs twice a day cleaning schedule that includes increased cleaning during peak times.
AREA ASSESSED	First Aid Camp Services
External Exposure Potential	BC ambulance personnel, helicopter pilot.
Internal Exposure Potential	Injured or ill worker with possible COVID-19, PCP, EMA, level 3 first aids, helpers.
Risk of Exposure	High
Recommendations	<ul style="list-style-type: none"> • A designated first aid room will be available for injured worker use only. • Contact the medic via radio before arriving at the first aid room. • WorkSafe BC OFFA protocols must be adhered to. • First aid attendants will use an isolation mask, gloves, face shield and safety glasses for all first aid assessments and treatments. • Daily health checks will be performed and a schedule will be made to ensure physical distancing is maintained between workers. • Due to the inability to physically distance, an isolation mask will be provided to an injured worker. • In the event of illness or symptoms of COVID-19, a N95 mask will be used by the first aid attendant and a non-surgical mask will be provided for the patient.

	<ul style="list-style-type: none"> Only the first aid attendant in charge will touch the patient. First aid helpers will also require masks and gloves. Perform extra hand washing, disinfecting of counters after and in between each use, cleaning of light switches, chairs and tables. Plastic pillow and sheet liners will be used to aid in disinfecting protocols. Linens will only be set out if required to meet the highest of sanitation standards. Ensure all hard surfaces and equipment is cleaned and sanitized after each use with 500 ppm bleach solution. All first aid treatments, COVID-19 assessments, contact tracing and outbreak investigations are confidential to ensure privacy of all individuals. Double Vaccinations required as of Dec.29, 2021
AREA ASSESSED	Shared Toilet / Washrooms / Showers
External Exposure Potential	Authorized camp visitors only.
Internal Exposure Potential	Skeena employees, contractors, sub-contractors.
Risk of Exposure	High
Recommendations	<ul style="list-style-type: none"> Sweep, spray, clean and disinfect with 500 ppm bleach solution twice a day. During high use times, additional cleaning will be provided, i.e., 4:00- 8:00. Stringent cleaning schedules will be posted and adhered to. Flip flops are to be worn in showers. Disinfecting spray will be available in each toilet cubicle and each shower stall to enable personal disinfecting prior to and after use. i.e., high touch areas. Should additional cleaning be required the washroom attendant will be available.
AREA ASSESSED	UTV Operation
External Exposure Potential	Repair shop
Internal Exposure Potential	UTV operators (certified only)

Risk of Exposure	High
Recommendations	<ul style="list-style-type: none"> • Assign UTV units to trained personnel only. • Sanitize equipment prior to pre-trip inspection. • Helmets or hard hats with safety straps must be worn by drivers and all passengers. • Due to the inability to social distance two meters, masks, safety glasses and gloves must be worn while operating or riding in the UTV. • Wash and sanitize hands. • Gloves must always be worn. • Sanitize helmets daily or in between different operators. • Clean and sanitize UTV high touch areas such as steering wheels, gear shifts, seat belts and all other operating mechanism but not limited to handles daily or in between users.
AREA ASSESSED	Multi-Employee Field Crews
External Exposure Potential	Other drivers at fuel stations, key lock pads, transportation operators, other passengers in vehicles, helicopter pilots and engineers.
Internal Exposure Potential	Other passengers in vehicle, helicopter, and bus service
Risk of Exposure	High
Recommendations	<ul style="list-style-type: none"> • Completion of daily self-monitoring form to demonstrate a two-week symptom free record before travelling to Eskay work site. • Perform daily self-monitoring. • If two or more people are unable to physically distance two meters with the drivers, pilots, or passengers then isolation masks with ear loops must be worn in all modes of public transport. • No eating or drinking during transport. • Helicopter flight protocols are mandated by Transport Canada. • Isolation masks with ear loops and gloves are always required prior to boarding an aircraft. • Establish a worker pod system. • Do not travel with an unassigned work pod. • Wash hands prior to getting into a vehicle or helicopter before the start of shift and at the end of the day. • Use sanitizer if hand washing station is not available.

	<ul style="list-style-type: none"> • Ensure workers have daily sanitation supplies. • Wear gloves for refueling and dispose of them afterwards. • Wash hands and wear a clean pair of gloves for vehicle travel. • Follow appropriate SWP for donning and doffing PPE. • Dispose of PPE in appropriate waste disposal containers. • Perform daily pre trip requirement to clean the cab of vehicle and worker transport compartment, door handles, doorknobs, windows, window handles, seat belts, steering wheels, signal lights, gear shifts, items on the dashboard, handheld radios, antennae, mobile radios, keypads and mics. • Double Vaccinations required as of Dec.29, 2021
AREA ASSESSED	Helicopter Travel / Medivac Road / MTC
External Exposure Potential	Helicopter pilot, engineer.
Internal Exposure Potential	Injured or Ill worker, medic
Risk of Exposure	High
Recommendations	<ul style="list-style-type: none"> • Please follow the helicopter company's protocols for medivac or known COVID-19 patients and orders from Transport Canada and the PHO. • Follow Skeena protocols for evacuation of injured workers and follow WorkSafe BC first aid protocols for OFAA. • Physically distance two meters where practical. • Isolation masks with ear loops and gloves will always be worn. • Apply isolation face mask and give gloves to the patient where possible. • If COVID-19 is suspected, ensure medivac attendant has on isolation suit, N95 mask and nitrile gloves. • First aid helpers must not touch the patient unless necessary and wear an isolation face mask and gloves. • First aid helpers should not touch the patient but can aid with loading where required. • While medivac attendant is away, other level three first aids will help with cleaning and disinfecting any areas that are potentially contaminated.

	<ul style="list-style-type: none"> Dispose of contaminated garbage to biohazard bags, secure bags and remove immediately to the garbage bin assigned for biohazard disposal as per the environmental technicians. Double Vaccinations required as of Dec. 29, 2021
AREA ASSESSED	Meal Service Kitchen
External Exposure Potential	Maintenance and repair staff, inspectors, clients and delivery personnel.
Internal Exposure Potential	All Skeena employees and contractors
Risk of Exposure	High
Recommendations	<ul style="list-style-type: none"> All kitchen staff will follow Northern Health food safe regulations in addition to COVID-19 requirements. Camp visitors must have authorization from the Mine Manager or Exploration Manager. Physical distancing of two meters must be followed in all kitchens, food prep, food service and dishwashing areas. Isolation masks and gloves will always be worn unless eating a meal. Two meter floor markers will be visible. Work shift schedules should not change during rotation and work pods must be maintained. Only cooks and authorized kitchen helpers are allowed in food preparation, food service, food storage and dishwashing work areas. Perform the four-step system for dishwashing that includes rinsing, washing, sanitizing and air drying. Change apron daily, wear a mask and wear gloves during food preparation and service. Sneeze guards will be installed in food service areas. Only cooks will serve meals. There is no buffet style service. All snacks and lunch items will be individually wrapped. There will be no common use items unless a hand wash facility is used prior to entering the kitchen and disposable gloves are in place. Handwashing must be completed prior to wearing the light plastic gloves needed to enter the kitchen to service meals or access the drink, lunch, or dessert coolers.

	<ul style="list-style-type: none"> • Stagger mealtimes to half an hour maximum per shift. • Adhere to occupancy limits as posted. • Do not change a scheduled mealtime. • Mealtimes will combine with work pods. • Workers must not congregate in any areas of camp. • Ensure sanitizers and disinfectants meet the BCCDC PHO requirements for B.C. • Daily cleaning will be completed after breakfast, dinner and as per Northern Health food safe requirements. • Tables must be cleaned and disinfected in between use. • Signage for clean tables must be available and visible. • Cleaning rags will be changed at least twice a day and laundered with cold water and QUAT solution or hot water and bleach. Mixing ratios will be provided as per the BCCDC. • Cleaning schedules will exceed food safe regulation in high use and exposure areas. • Double Vaccinations required 29 Dec 2021
AREA ASSESSED	Dining Hall / Water Refill Station
External Exposure Potential	Maintenance and repair staff, inspectors, short term stay clients and arrivals off rotational crew change day.
Internal Exposure Potential	All Skeena employees and contractors.
Risk of Exposure	High
Recommendations	<ul style="list-style-type: none"> • Camp visitors must be authorized by Exploration Manager. • There are no short-term stays in remote fly in camps that do not arrive on crew change day. • Short term visitors are not allowed in the main camp or other congregate areas of camp facilities. • Designated sleeping rooms away from the main camp will access meals through a takeout service at the back door of the kitchen. Ring the bell for service. • The Eskay camp will deliver meals to visitors in A dorm accommodation. • Physical distancing of two meters must be followed at all times. • Spacing will be displayed accordingly with distancing signs at the appropriate space required. • Place sneeze guards where practical for common use items e.g., tea and coffee pots.

	<ul style="list-style-type: none"> Isolation masks with ear loops will always be worn indoors. Stagger mealtimes to half an hour maximum per shift. Stay within your designated mealtime and work pod. Workers must not congregate in any areas of camp. Handwashing must be completed before donning gloves to enter the lunch preparation area. All take out meal utensils and dishes will be disposable for ease of care. Workers will tie garbage bags and place them in the appropriate location. Kitchen staff will secure and remove garbage as per food safe regulations. Double Vaccinations required as of Dec. 29, 2021
AREA ASSESSED	Core Cutting Shack
External Exposure Potential	Delivery personnel.
Internal Exposure Potential	Designated work pods, required Skeena management and employees, shared PPE.
Risk of Exposure	Medium
Recommendations	<ul style="list-style-type: none"> Physically distance two meters. Respirators or isolation masks will be worn if indoors or where unable to physically distance. There will be no shared PPE. Surfaces of machinery will be sanitized between worker pods at the beginning and at the end of the shift. PPE designated to Individuals for use. Training for cleaning and maintenance of PPE will be provided. Double Vaccinations required Dec. 29, 2021
AREA ASSESSED	Support Pumps i.e., Fuel and Water
External Exposure Potential	Maintenance workers, off site delivery personnel.
Internal Exposure Potential	Maintenance workers.
Risk of Exposure	Medium
Recommendations	<ul style="list-style-type: none"> Physically distance two meters.

	<ul style="list-style-type: none"> • Masks must be worn where physical distancing is not possible. • Wear gloves and wash hands frequently. • Wash and sanitize surfaces of support pumps and attachments before and after use. • Designate PPE to individuals for use. • Site designated washrooms are clearly marked for use. • Do not enter the kitchen or dining area. Ask someone to get your food and drink if required. • Double Vaccinations required as of Dec.29, 2021
AREA ASSESSED	Commercial Water / Sewer / Garbage
External Exposure Potential	Authorized truck drivers only.
Internal Exposure Potential	Skeena employees or contractors who help drivers.
Risk of Exposure	High
Recommendations	<ul style="list-style-type: none"> • Physically distance two meters and if not possible, wear a mask. • Wear gloves and wash hands frequently. • Sanitize surfaces of support pumps and attachments before and after use. • Designate PPE to individuals for use. • Garbage bags must be tied and disposed of daily. • Use the designated washroom facilities at mine site. • Drivers are not allowed in the kitchen or dining areas. • Ensure to ask for food and drink if required. • Double Vaccinations required as of Dec.29, 2021
AREA ASSESSED	Virtual Mental Health Support
External Exposure Potential	CISS management if required.
Internal Exposure Potential	JOHSC members, mine site managers, health & safety advisors, exploration managers, medic.
Risk of Exposure	Medium
Recommendations	<ul style="list-style-type: none"> • Ensure physical distancing of two meters. • Isolation masks must be worn if unable to physically distance or if indoors. • Frequently wash or sanitize hands.

AREA ASSESSED	Fuel/Gas Stations
External Exposure Potential	Delivery truck drivers.
Internal Exposure Potential	All Skeena employees and contractors that drive light trucks or operate machinery.
Risk of Exposure	High
Recommendations	<ul style="list-style-type: none"> • Physically distance two meters and if not possible, wear a mask or face covering. • Wear gloves and frequently wash hands. • Sanitize surfaces of support pumps and attachments before and after use. • Designate PPE to individuals for use. • Double Vaccinations required Dec.29, 2021
AREA ASSESSED	Water Delivery Systems, Pumps, Hoses, Tanks
External Exposure Potential	Water delivery truck drivers.
Internal Exposure Potential	Skeena maintenance workers.
Risk of Exposure	Medium
Recommendations	<ul style="list-style-type: none"> • Physically distance two meters and where not possible, masks or face coverings will be worn. • Wear gloves and frequently wash hands. • Sanitize surfaces of support pumps and attachments before and after use. • PPE designated to individuals for use. • Double Vaccinations required as of Dec.29, 2021
AREA ASSESSED	Dry – Geo/Driller Shared Facility
External Exposure Potential	Maintenance workers.
Internal Exposure Potential	All Skeena employees & contractors.
Risk of Exposure	High
Recommendations	<ul style="list-style-type: none"> • Sweep, spray clean and disinfect with 500 ppm bleach solution twice a day. • During high use times, additional cleaning will be provided i.e., 4:00- 8:00. A stringent cleaning schedule will be posted and adhered to.

	<ul style="list-style-type: none"> • Flip flops are to be worn in showers. • Disinfecting spray will be available in each toilet cubicle and each shower stall to enable personal disinfecting prior to and after use of high touch area. • Should further cleaning be required the washroom attendant will be available. • Garbage bins will not overflow at any time and will be securely tied for disposal into the garbage bin. • Double Vaccinations required as of Dec.29, 2021
AREA ASSESSED	Isolation
External Exposure Potential	None
Internal Exposure Potential	Medic only.
Risk of Exposure	High
Recommendations	<ul style="list-style-type: none"> • Designated isolation accommodations are available and clearly posted. • Do not enter the isolation area. • Clearly indicate that designated isolation hand wash locations and outhouses in tent camps are for isolation use only. • Room locations are recorded by the medic and provided to the Mine Manager or Exploration Manager. • Strict protocols are in place and will be adhered to. • If a worker is sick or develops COVID-19 symptoms, they must immediately isolate and report to the medic while following any directions from the medic under the direction of the Medical Doctor and Medical Health Officer. • If ordered by the Medical Doctor, a COVID-19 test will only be collected by the medic. • Workers will not enter the isolation areas if they are not sick. • Only first aid, medical or mental health support workers will interact with isolated workers. • Isolation stays are for ten days as directed by PHO orders or until symptoms have been cleared and the worker has been released by the doctor. • Provide a radio for communications. • Have a secure radio channel with the medic. • Skeena's daily self-monitoring and temperature will be collected and reported to the medic.

	<ul style="list-style-type: none"> • The medic will check in regularly via radio on a designated channel. • Meals will be delivered and set for the Isolated individuals outside the door on a table. All dishes will be disposable. • Medics that deliver all meals and supplies will wash hands, wear gloves and wear an isolation mask and gown. • After eating, workers will dispose of used utensils and plates, remove gloves and wash hands thoroughly. • Gloves will be disposed of in an appropriate bin. • Isolation facilities will be cleaned by a designated individual only after the room has been left vacant with the windows open for 24 hours. • Clean linen will be left on the table outside of the door. • Soiled linen and laundry will be secured in a garbage bag and left outside the door for the cleaning staff to process and return. • Cleaning and disinfecting products will be provided for an individual in isolation to clean their own room for the ten-day isolation period. • Once the worker has returned to work or left the work site, cleaning staff will use an isolation suit, safety glasses, face shield, isolation mask and gloves while cleaning and disinfecting all areas using QUAT. • Garbage will be tied securely and placed in an outside bin by a designated individual only.
AREA ASSESSED	Laundry Facilities / Separate Facilities for Diamond Drill Laundry
External Exposure Potential	Electrician, plumber.
Internal Exposure Potential	Skeena employees and contractors.
Risk of Exposure	High
Recommendations	<ul style="list-style-type: none"> • Ensure physical distancing of two meters where possible. • Masks or face coverings will always be worn. • Frequently wash hands and sanitize before entering and upon exit. • Practice cough and sneeze etiquette. • Use a cold-water washing detergent with QUAT disinfectant to kill COVID-19. • Hot water and soap can also be used to kill COVID-19.

	<ul style="list-style-type: none"> • Wear gloves and spray disinfect on any high touch areas of use i.e., doorknobs and door handles. • Workers are responsible for their own laundry and items left on the floor or counters will be disposed of during the daily cleaning schedule. • Machines, light switches, counters, walls and floors will be disinfected daily. • Garbage will be disposed of daily. • Double Vaccinations required as of Dec.29, 2021
AREA ASSESSED	Waste Management / Incinerator
External Exposure Potential	Electrician.
Internal Exposure Potential	Skeena designated employees and contractors.
Risk of Exposure	High
Recommendations	<ul style="list-style-type: none"> • Daily garbage pickup and disposal will be provided by designated individuals. • Frequently wash or sanitize hands before putting on appropriate gloves to handle garbage. • Safety glasses and coveralls must be worn. • Frequently disinfect buttons and machinery parts that are touched with bare hands. • Double Vaccinations required as of Dec.29, 2021
AREA ASSESSED	Visitors in Short Term Camp Locations
External Exposure Potential	Short term visitors required for specialty requirements on site.
Internal Exposure Potential	Other short-term workers, Skeena employees and contractors.
Risk of Exposure	High
Recommendations	<ul style="list-style-type: none"> • Perform two weeks of daily self-monitoring as per Skeena's protocol before, during and after travelling to camp or for two weeks after leaving any Skeena worksite. • Complete pandemic awareness training and COVID-19 orientation. • Contact logistics for short term accommodation availability and confirm travel arrangements prior to travel.

	<ul style="list-style-type: none"> Follow all COVID-19 protocols while on site and ensure no interactions with camp dwellers. Ensure physical distancing of two meters at all times. Isolation masks or face coverings are mandatory in all inside areas and work locations. Daily temperature and health checks will be provided by the site medic. If traveling in a vehicle with more than two people, masks and gloves are required if there is no hand sanitizer available. Frequently wash and sanitize hands. Do not touch your face. Practice cough and sneeze etiquette Double Vaccinations required as of Dec.29, 2021
AREA ASSESSED	Temporary Individual Trailer Units
External Exposure Potential	Short term visitors required for specialty tasks on site.
Internal Exposure Potential	Short-term workers, Skeena employees and contractors.
Risk of Exposure	High
Recommendations	<ul style="list-style-type: none"> Perform two weeks of daily self-monitoring as per Skeena's protocol before, during and after travelling to camp or for two weeks after leaving any Skeena worksite. Completion of pandemic awareness training and COVID-19 orientation. Contact logistics for availability and travel arrangements. There are no communal food items available. Five-gallon potable water for drinking will be supplied to replenish water bottles. Ensure visitors bring all their own groceries and personal items required for their stay including towels, bedding, bed sheets, quilts, sleeping bags, camper queen size beds with mattress, etc. Premade meals will be provided and will be accessible through the designated individual in the Skeena trailer. Daily temperature checks and health checks will be provided by the site medic. COVID-19 cleaning supplies will be available for the required daily personal cleaning and disinfecting of high touch areas inside and outside of trailers.

	<ul style="list-style-type: none"> • Paper towels will be provided for kitchen use. • J cloths and dish drying racks will be provided. • J cloths will be disposed of. • Brooms and dust pans are available for daily use in each unit. • Enhanced cleaning protocols will be provided by designated cleaning staff between each user at the end of their stay. • Units will include showers, curtains, washrooms, toilets, stoves, sinks, fridges and counters. • Paper towels and toilet paper will be replenished by the cleaning staff. • Trailers will sit for 24 hours between users. • Designated cleaning staff will be available for daily cleaning of outside wash stations, outhouses and any other high touch, frequently used areas that are outside of the individual use trailers. • Double Vaccinations required as of Dec.29, 2021
AREA ASSESSED	Security Gates
External Exposure Potential	All light trucks, commercial vehicles and equipment.
Internal Exposure Potential	Skeena employees and contractors.
Risk of Exposure	High
Recommendations	<ul style="list-style-type: none"> • Obtain pandemic awareness certificate and complete communicable disease orientation. • All delivery trucks will complete Skeena Self health Questionnaire • Contact logistics or Mine Manager for delivery notifications. • Physically distance two meters and if not possible, an isolation mask or face covering must be worn. • Frequently wash or sanitize hands. • Always wear gloves. • Double Vaccinations required as of Dec.29, 2021
AREA ASSESSED	Personal Rooms
External Exposure Potential	No visitors.
Internal Exposure Potential	Skeena management, medic, other first aid if required.

Risk of Exposure	Med
Recommendations	<ul style="list-style-type: none"> • Submit Self Health questionnaire 6:00 pm the day prior to travel. • There is NO visiting in individual rooms, this behavior is subject to removal of camp privileges. • Physically distance two meters in hallways. • Isolation masks with ear loops must always be worn. • Tenants will bring own pillow and personal belongings. • Frequently wash and sanitize hands. • Self-disinfect high touch areas of the room with the spray bottles provided. • Seal the rooms garbage bag for daily removal. • Remove all belongings upon leaving.
AREA ASSESSED	Smoking Areas
External Exposure Potential	Day delivery drivers.
Internal Exposure Potential	Skeena employees and contractors.
Risk of Exposure	HIGH
Recommendations	<ul style="list-style-type: none"> • Complete the self-health questionnaire. • Stay in the vehicle and wait for someone will unload it. • Use the designated washroom facility at the mine site. • A mask or face covering must always be used out of the vehicle. • Always physically distance two meters. • Do not touch cigarette waste receptacle with your hands. • Frequently wash and sanitize hands.
AREA ASSESSED	Portable Hand Wash Stations
External Exposure Potential	Day visitors.
Internal Exposure Potential	Skeena employees and contractors.
Risk of Exposure	High

Recommendations	<ul style="list-style-type: none"> • Complete the two week daily self-monitoring questionnaire as per Skeena's protocol prior to coming to camp. • Complete the self-health questionnaire the evening before entering camp. • Complete the pandemic awareness and COVID-19 orientations. • Ensure two meters of physical distance. • Frequently wash hands. • Self-disinfect high touch areas with the spray bottles provided. • Sanitize areas only after washing. • Seal the rooms garbage bag for daily removal. • Double Vaccinations required as of Dec.29, 2021
-----------------	--

3. Skeena's Crew Transportation Protocol

- Do not travel to camp if you are sick and follow Skeena's COVID-19 flow sheets.
- Contact HR for Sick Leave Policy
- Self assessment is required for a two-week period prior to coming to site, when travelling to site, while on site and while travelling home. This will be continued for the duration of the 2022 season or until the Public Health Order for State of Emergency is rescinded. Daily temperatures will be taken by qualified health professionals, licensed EMAs or OFA level threes.
- Charter flights require adherence to Federal Travel Restrictions for all personnel travelling to site from Vancouver, Kamloops, Prince George, Smithers
- When required, bus charters will transport work crews. Isolation masks with ear loops are required at all times for all passengers and the driver.
- Crew change work pods are in place to accommodate 14 plus one day rotations to allow the option for some contractors to work a 30-day schedule.
- Worksite assigned work pods will also be in effect where possible to limit contact for the spread of COVID-19 and other communicable disease that may circulate through the workplace.
- While travelling in an aircraft with two or more occupants, isolation masks with ear loops and gloves will be worn prior to boarding the aircraft.
- The vehicles transporting workers to Eskay Creek require all persons to wear an isolation mask with ear loops.
- Transportation for designated work pods will be arranged before crew change.
- Gloves and isolation masks or a face covering will be worn in any vehicle with two or more people.

- A journey management plan will be required prior to departure to ensure the safety of the crew. This will include plans for departures, stop locations and arrival check-in.
- Increased crew transportation capacity for operations on the property to accommodate social distancing is in effect, where practical.

4. Isolation at Camp, Communicable Disease(s)

Please refer to Skeena's Standard Operating Procedure, "Isolation at Camp, Communicable Disease(s)". Skeena has provisions for isolation requirements in all camp locations.

- Any individual who develops symptoms that include a mild cough, fever, difficulty breathing, or sore throat will:
 - Apply an isolation mask or tissue to cover mouth and nose.
 - Promptly advise the medic of symptoms and stay in their room.
 - After being assessed by the Medic, a Covid -19 POC Rapid Antigen Test will be provided. A positive result will initiate an Isolation period of 5 days, or until symptoms subside and a Negative result provided.
 - Infected Individuals in an isolation will be provided daily monitoring and care by the site medic.
 - The Infection Prevention Control Officer will be contacted immediately for confirmation of result and medical status of Positive Case.
 - The Infection Prevention Control Officer will provide immediate reporting to the Northern Health Medical Health Officer, Medical Physician on call and the Skeena COVID-19 ERP.
 - Support for the sick or individuals with symptoms in self-isolation will be provided for ten days while they stay in their own room.
 - Vaccinated Individuals with break through cases once asymptomatic may be released 7 days after testing positive with a RAD.
 - Isolation dorms and rooms are separate from the camp.
 - Any rooms that were used by an infected person will be cleaned and disinfected at least 24 hours after checkout.
- Only the site medic (reverse precautions) will bring food or other required items to the person in self-isolation. The medic will leave items on a table outside of the infected person's room and knock on the door to let them know it is there. When the infected person is finished eating, the individual must dispose of all used items such as plates, cups and cutlery into the garbage. These measures help to avoid face to face contact.
- All garbage will be disposed of in red biohazard bags and dealt with according to the site waste disposal requirements.
- The infected person must not share any household items including, but not limited to, dishes, cups, eating utensils, towels, and bed sheets.
- A designated bathroom will be provided for individuals that are self-isolating. The toilet seat must be closed before flushing.

- The infected person must take their temperature twice a day. Thermometers will be provided.
- If a fever remains after ten days, the infected person must stay in isolation.
- It is common for a cough to remain after the ten-day isolation period. The person may be considered to resume work if no other symptoms are present.

5. On-site First Aid & Medical Services

The Skeena Argillite Camp, Eskay Camp and worksites are equipped with WorkSafeBC regulation first aid rooms, level three first aid equipment, medical oxygen units, AEDs and qualified EAMLAB licensed paramedical supplies. A mobile treatment centre, emergency transportation vehicle and equipment is also available at Argillite Camp and the Eskay Camp. Additionally, a mobile treatment centre (MTC), an emergency transportation vehicle (ETV - Ford Expedition) with emergency transportation equipment is positioned at North Spoils. North Spoils is located at Km 3 on the Forrest Kerr Road on the left side when travelling in. In the unlikely event of a medical evacuation due to illness or if a helicopter is not available due to operational considerations or weather conditions, then medical rooms are operational at Argillite Camp, Eskay Camps and the North Spoils geology office. Medical Rooms are equipped with a level three first aid kit and AED.

Skeena is committed to allowing all managers, employees, contractors, and visitors to return to work while they are still on site by treating illness, supporting treat and return to work incident injury management enabling workers to return to normal job duties or by implementing modified duties. Physio or medical services available include on site virtual physio or medical assessments supported by the site medics, dispensing of prescription drugs by the medical services provider Total Physio Medical (now as Matau) On call physicians from local medical doctors are stationed in Smithers and Houston are familiar with Northern B.C. Mine and Camp locations. A Licensed Emergency Medical primary care paramedic, emergency medical assistant or dedicated WorkSafeBC level 3 first aid attendant are available on-site 24/7 to respond to first aid, medical or physio needs. There are also multiple level three first aid attendants on site for support when required. The Eskay Creek camp is equipped for rapid category transport, with access to the Heli pad just back of the Medical Facility at Eskay, details of which can be found in the up-to-date MERP.

Promotion of Employee, Contractor and Visitor Mental Health

Communicable disease events cause increased levels of stress and/or anxiety due to uncertainty for employees, contractors, and visitors. COVID -19 is new and ever evolving as are the information systems. Social media has provided a negative impact on trustworthy information. Providing viable resources for information and a positive outcome is critical to the mental health and wellbeing of many individuals at camp. Leaving family members behind is also stressful, creating further uncertainty.

As part of this plan to promote mental health, it is a good opportunity to review related organizational policies and programs such as:

- Employee & Family Assistance Program for Skeena Resources Limited
- Mental Health Resources, available through Site Medical Services
- BVCIRT (Smithers), available for team debrief or individual sessions
- Northern Society Domestic Peace Smithers.
- Community Relations Manager - Tahltan Central Government, First Nations Health Authority
 - Iskut
 - Dease Lake
 - Telegraph
- Local community resources in Northern Health Authority.
 - Kitwanga
 - Hazelton
 - Moricetown
 - Terrace

6. COVID-19 Rapid Antigen Screening & Isolation Protocols

COVID-19/ Communicable Disease	Isolation Protocols
Prevention	<ul style="list-style-type: none"> • All Skeena employees, subcontractors and visitors are subject to a self monitoring assessment and must indicate symptoms on the Skeena Self Health Assessment and/or any COVID-19 contact or exposure. • <i>There will be no travel if you have flu like symptoms.</i> • Skeena flow charts with protocols for assessing symptoms of COVID-19 prior to, during and after traveling to camp are provided with the self health assessment form. • Work schedules will accommodate 14 plus one day rotations to accommodate work pods. This will aid Skeena's ICPC to prevent communicable disease and minimize transmission of COVID-19 and or flu like illness to Skeena camps and local communities. • Develop and implement an IPCP/Communicable Disease Prevention plan • Complete risk assessments of all high touch areas. • Individuals need to practice physical distancing of two meters from each other when possible and decrease social interactions. • If unable to physically distance, other practices must be followed such as wearing gloves and an isolation mask.

	<ul style="list-style-type: none"> • Isolation masks with ear loops will be worn in all indoor spaces, outdoors if unable to physically distance, in a vehicle with more than one person and on all public transportation whether that be by land, sea or air. • Practice hand hygiene by cleaning hands with soap and water by washing for 20 seconds or by using alcohol-based hand sanitizer with a minimum 60% alcohol. This is the most important at the following times: <ul style="list-style-type: none"> • Before eating or preparing food. • After coughing, sneezing, or blowing nose. • Before and after contact with an ill person. • After touching dirty surfaces such as taps and doorknobs. • After going to the bathroom. • Practice respiratory etiquette by: <ul style="list-style-type: none"> • Covering coughs and sneezes with a sleeve or tissue. • Disposing of used tissues in the garbage. • Cleaning hands after coughing or sneezing.
<p>Prior to traveling to camp quarantine or self isolation: at home</p>	<ul style="list-style-type: none"> • Complete a daily self monitoring form • A 5 day Isolation Period is required as fully vaccinated individuals. • Do not travel to camp if you are experiencing COVID-19 or communicable disease symptoms which include a headache, mild cough, fever, difficulty breathing, sore throat, and loss of smell or taste. • If you develop COVID-19 symptoms, you must: <ul style="list-style-type: none"> • Wear a surgical mask or tissue to cover your mouth and nose. • Promptly move to an area separate from others. This area should be behind a closed door if possible. If there is no place to Isolate, notify the local health authority. • Stay in Isolation for a minimum of 5 days or until released by your doctor. • Vaccinated individuals with breakthrough cases, may be released from isolation if they do not have any symptoms after the 5 day isolation period . • A POCT Rapid Antigen test will be provided prior to release.

	<ul style="list-style-type: none"> • Do not travel on public transit if instructed to travel to a COVID-19 testing centre. • Wear gloves and a mask or face covering if taking a cab to a medical center and ensure you are honest with the driver about the reason for your trip. • Isolate in your own room and have someone check on you for five days. This room should be isolated from others and have good airflow. • Clean and disinfect any room that was used by an infected person. • A designated person will bring food to an infected person, leave it outside of their room and knock on the door to let them know it is there. When finished eating, the infected person will leave the dishes outside the room for pick-up. These measures are meant to avoid face-to-face contact. • When the designated person is handling the dishes, gloves need to always be worn. • Do not share any household items such as dishes, cups, eating utensils, towels or bed sheets. • Maintain a designated bathroom for the infected individual while self-isolating. Make sure the toilet seat is closed before flushing. • Complete a Skeena self health assessment to come to work as soon as symptoms have subsided either on inter-rotational Wednesday or the next scheduled Wednesday crew change day. • Remain in isolation If a fever remains after 5 days. • It is common for a cough to remain after the 5 days in isolation so travel or work may resume once no other symptoms are present and only after being cleared by a medical doctor, or provide a Negative Rapid Antigen Test.
Transportation to medical facility at home	<ul style="list-style-type: none"> • If symptoms become severe, i.e., severe respiratory problems, the patient must be rapidly transported to the emergency room by the BC Ambulance Service/911. • Wear gloves and an isolation mask or face covering during transportation. • The BC Ambulance Service will notify the emergency department that someone is arriving with COVID-19.

	<ul style="list-style-type: none"> Once the patient is transferred to the emergency department, all family members must isolate for a minimum of 5-10 days depending on vaccination status.
COVID-19 Rapid Antigen Screening Program Isolation at camp	<ul style="list-style-type: none"> All individuals arriving to site require a Rapid Antigen Test prior to the use of camp facilities. You are required to wait in your room for the 20-minute duration while your test is being completed. All positive results follow the directions of the PHSA/ BDDCD COVID-19 Rapid Antigen Screening Program. Isolation protocols follow the directions of Northern Health Authority. If someone develops COVID-19 symptoms that include a mild cough, fever, difficulty breathing, sore throat or loss of smell and taste, they must: <ul style="list-style-type: none"> Wear a surgical mask to cover their mouth and nose. Immediately go to their personal room until advised otherwise by the medic. Call the medic as soon as possible. An assessment will be provided, and a Rapid Antigen Test will be performed as per BCDC Screening program. 2 Positive Rapid Antigen Tests results required if Positive. Have a radio for communication. All food is delivered in disposable containers, Wear gloves and a mask while smoking in a designated, isolated smoking area. Have their room cleaned and disinfected with solutions approved by the PHO in BC or by Health Canada 24 hrs after departure. A designated person must bring food to infected person in self-isolation, leave it outside their room and knock on the door to let them know it is there. When finished eating, put disposable in your garbage. These measures are meant to avoid face-to-face contact. Linens will be left outside of the infected persons door. All garbage and linens must be placed in a sealed garbage bag and left outside of the door.

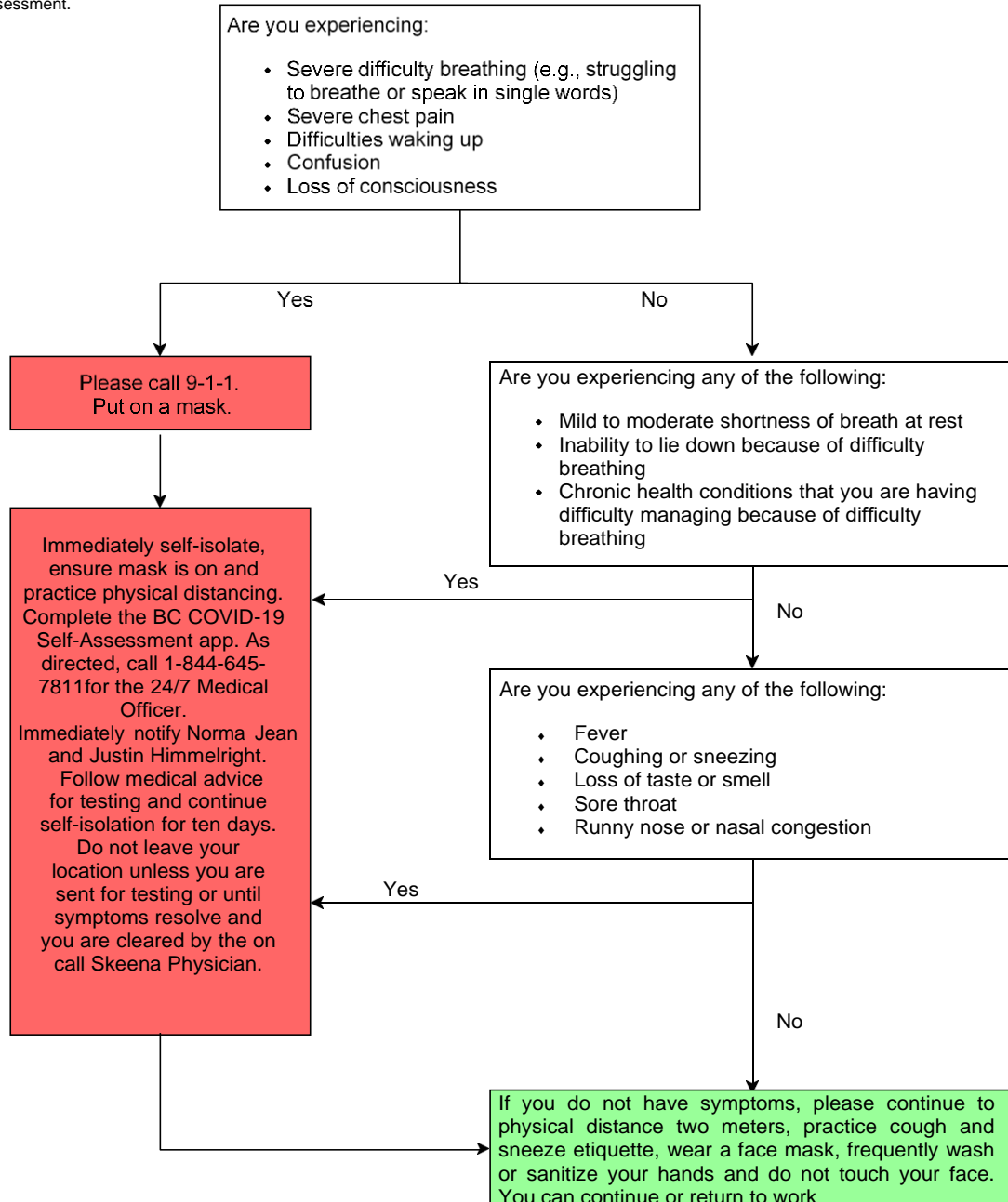
	<ul style="list-style-type: none"> • Cleaning supplies will be provided for the infected individuals stay. There will be no daily cleaning service. • A designated bathroom is provided for infected individuals that are self-isolating. The individual must make sure the toilet seat is closed before flushing. • The infected person must report all temperatures and symptoms twice a day to the medic. • If symptoms or a fever remain after five days, the individual must stay in isolation until symptoms subside and a negative rapid antigen test result is demonstrated. The Infection Prevention Manager will notify the local Medical Health Officer and the Skeena COVID-19 ERT of all positive cases.
Cleaning	<ul style="list-style-type: none"> • High touch areas in the camp including toilets, bedside tables and door handles need be disinfected at least once a day. Examples of appropriate disinfectants include: <ul style="list-style-type: none"> • A diluted bleach solution consisting of one part bleach to 50 parts water (i.e., 20 ml of bleach to 1 L of water), Lysol with bleach or Clorox products. The surface must remain wet for one minute. • Accelerated hydrogen peroxide (minimum 0.5%) e.g., Clorox hydrogen peroxide cleaner disinfectant wipes (apply for two minutes), Oxy-1 Wipes (apply for 30 seconds). • Quaternary ammonium compounds (QUATS). • Using ordinary cleaning and sanitation procedures for dishes are sufficient for killing the virus. • Gloves, facemasks, and eye protection must be worn when washing linens. Laundry must be washed with hot water (60-90°C) and laundry soap. • Laundry must be thoroughly dried. • Proper hand hygiene must be performed after all cleaning procedures. • A COVID-19 cleaning checklist will be provided to the cleaning staff. • The room will not be used for 24 hrs.

<p>Transportation from camp</p>	<ul style="list-style-type: none"> • If symptoms become severe, i.e., severe respiratory problems ensue, the patient must report to the medic as soon as possible to be reassessed and the on call medical service provider must be contacted. • The on-call physician will assess the patient and as necessary will plan to receive the patient at the appropriate emergency department. • A helicopter may be used for rapid transport to an emergency department. • The medic will notify the helicopter pilot ahead of time to ensure adequate PPE is in place to transport the COVID-19 patient. Pilot PPE is dictated by Transport Canada. • The medic will notify the Mine Manager of the infected individual's location and information to confirm the arrival location and arrange with the BC Ambulance Service to pick up the individual at the airport in Terrace, BC. • The medic will prepare the patient with appropriate isolation masks, gloves and other pertinent items. • Test results are provided to the Ambulance and receiving hospital ahead of transport. • No one will enter an infected worker's room under any circumstance until notified that it is safe to do so. • There are overnight Skeena isolation accommodations available in Terrace, B.C. that are arranged by on site medical services.
---------------------------------	--

7. Skeena COVID-19 Flow Charts

BC COVID-19 Symptom Self-Assessment Chart While Staying in Town and Traveling to Skeena Worksites

The information on this chart was originally developed by the BC Ministry of Health. It has been further developed to meet the COVID-19 Infection Prevention and Control Plan Assessment and reporting procedures of Skeena Resources Limited to support employees and contractors while working in town and traveling to Skeena Worksites. It also provides information to the Northern Health Medical Officer to determine further requirements for assessment or testing for COVID-19. The BC COVID-19 app is also a tool provided by the BC Ministry of Health that is referenced for self-assessment.

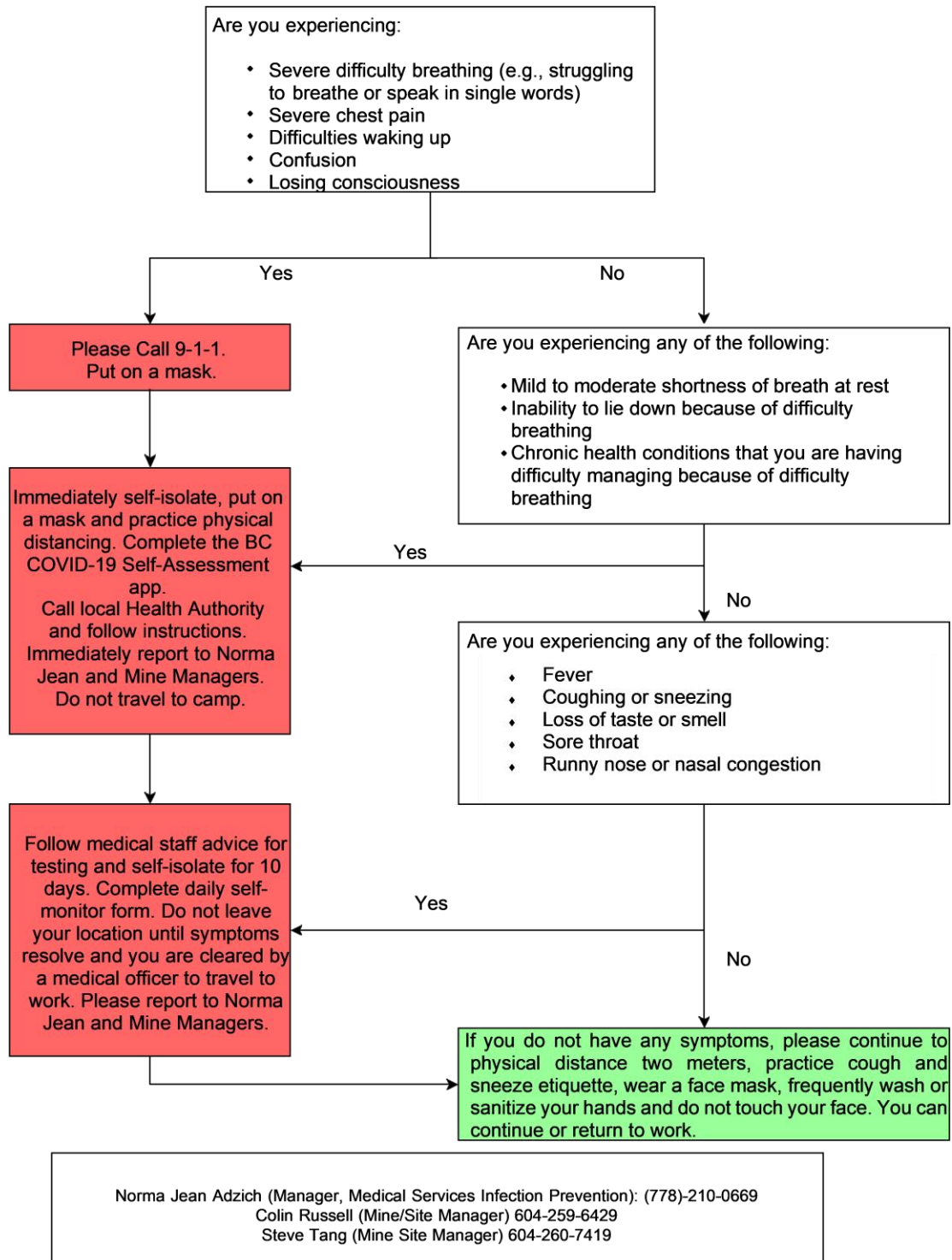


Norma Jean Adzich (Manager Medical Services & Infection Prevention): (778) 210-0669
Colin Russell (Mine/Site Manager) 604-259-6429
Steve Tang (Mine Site Manager) 604-260-7419

BC COVID-19 Symptom Self-Assessment Chart

Before Travelling to camp

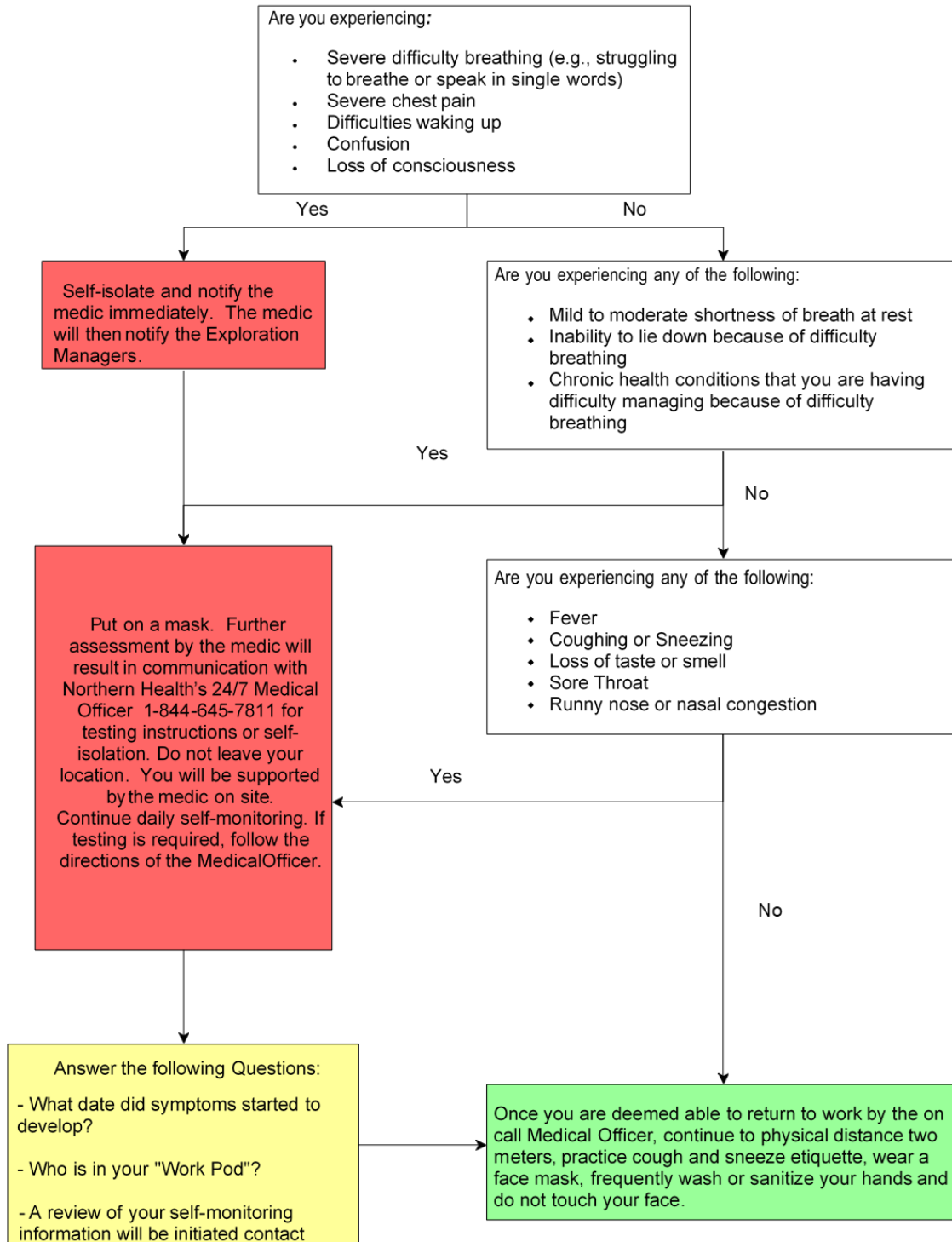
The information on this chart was originally developed by the BC Ministry of Health. It has been further developed to meet the COVID-19 Infection Prevention and Control Plan Assessment and reporting procedures of Skeena Resources Limited to support employees and contractors prior to travelling to camp to provide information to your local Health Authority Medical Officer in order to determine further requirements for assessment or testing for COVID-19. The BC COVID-19 app is also a tool provided by the BC Ministry of Health that is referenced for self-assessment.



BC COVID-19 Symptom Self-Assessment Chart

While at Camp

The information on this chart was originally developed by the BC Ministry of Health. It has been further developed to meet the COVID-19 Infection Prevention and Control Plan Assessment and reporting procedures of Skeena Resources Limited to support employees and contractors while working at camp to provide information to the Northern Health Medical Officer to determine further requirements for assessment or testing for COVID-19. The BC COVID-19 app is also a tool provided by the BC Ministry of Health that is referenced for self-assessment.



8. Resources / References

https://www.healthlinkbc.ca/hlbc/files/self-isolation_and_COVID-19-f.pdf

<https://www.canada.ca/en/public-health/services/publications/diseases-conditions/self-monitoring-self-isolation-isolation-for-COVID-19.html>

<https://www.worksafebc.com/en/covid-19/communicable-disease-resources>

[WorkSafeBC Resources - managing-mental-health-effects-Communicable Disease-guide-for-employer](#)

Ministry of Energy, Mines and Petroleum Resources. 2020. Guidance to mining and smelting operations during COVID-19. Victoria. Retrieved from:

<https://news.gov.bc.ca/releases/2020EMBC0014-000560>

BCCDC/Ministry of Health:

http://www.bccdc.ca/Health-Info-Site/Documents/COVID_public_guidance/All-sector-work-camps-guidance.pdf

https://www.northernhealth.ca/sites/northern_health/files/services/office-health-resource-development/documents/COVID-19-nh-medical-health-officer-position-RADT.pdf

<https://www2.gov.bc.ca/assets/gov/health/about-bc-s-health-care-system/office-of-the-provincial-health-officer/COVID-19/COVID-19-pho-order-industrial-camps.pdf>

[COVID-19 Public Health Guidance.pdf \(bccdc.ca\)](#)

<http://www.bccdc.ca/health-info/diseases-conditions/Communicable Disease>

[COMMUNICABLE DISEASE and communicable disease - WorkSafeBC](#)

[Deputy's Letter \(gov.bc.ca\)](#)

